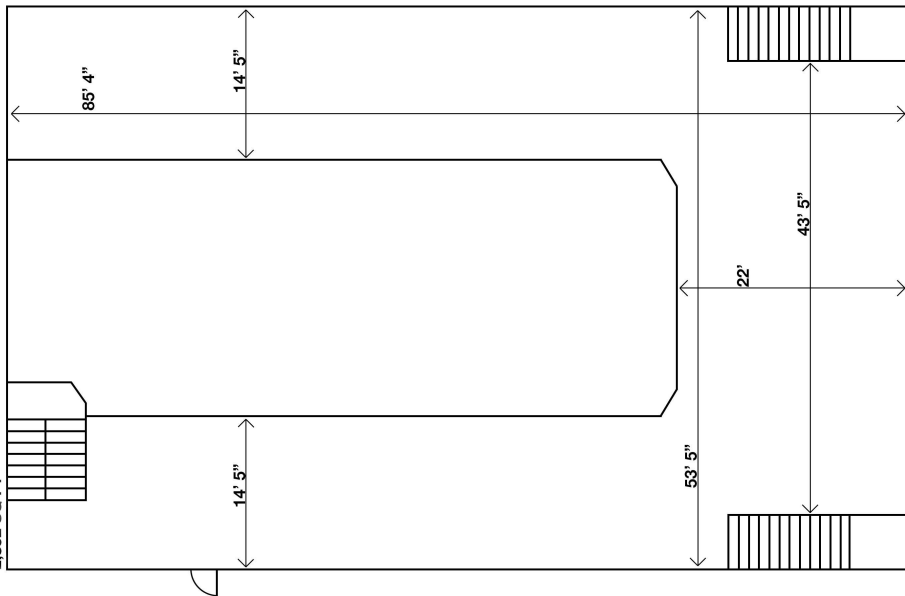


'1871' BERKELEY CHURCH  
315 QUEEN ST. E

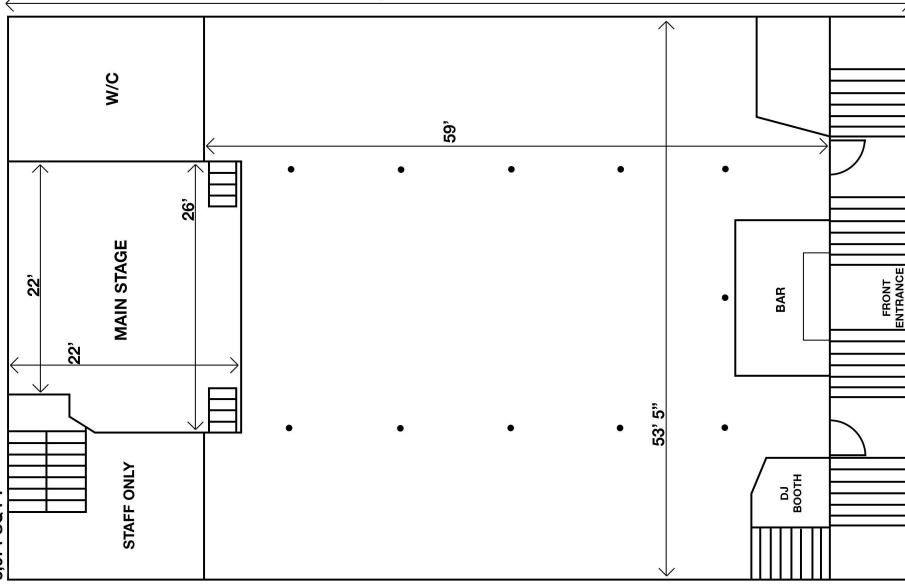


650 STANDING  
330 SEATED  
(main floor & mezzanine levels)

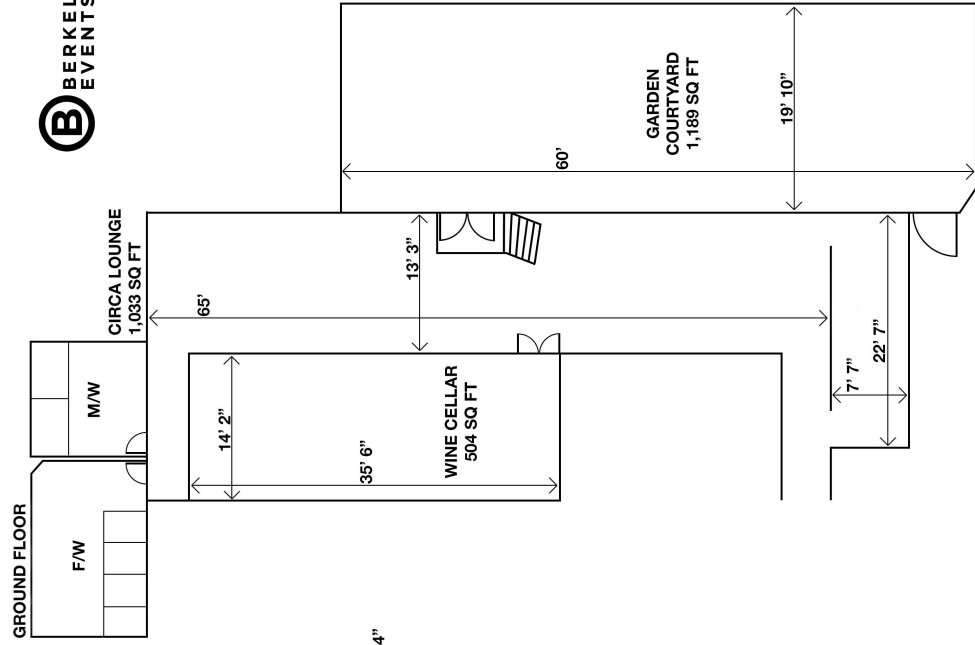
SECOND FLOOR/MEZZANINE  
2,852 SQ. FT.



MAIN FLOOR  
3,671 SQ. FT.



GROUND FLOOR



QUEEN ST EAST